

SUGATSUNE

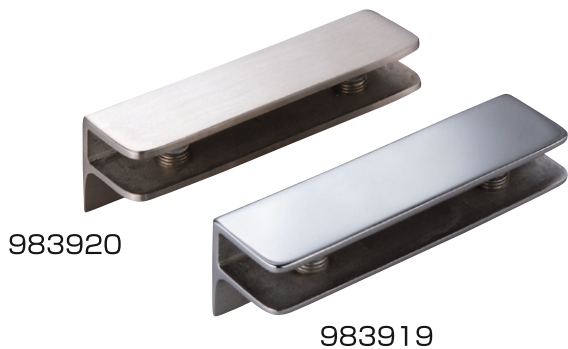


GLASS SHELF BRACKETS

LAMP[®]

Glass Shelf Brackets 983919, 983920

SUS TEMPERED GLASS



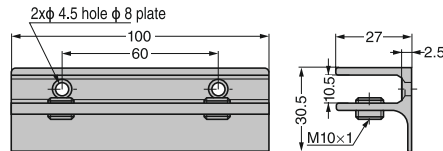
- Made of stainless steel, it has excellent corrosion resistance.
- Use a hexagonal wrench (nominal size 5) to fix the glass plate.
- Parts set with tempered glass shelf plate is also available

【Recommended screw】

- Cross recessed countersunk tapping screw Nominal 4 or countersunk screw M4 (stainless steel)

【Note】

- Please be sure to check the plate support load data table



RcHS	CAD	Product Code	Product Name	Application Glass Thickness	Shelf Depth	Shelf Depth With Stand Load N/2pcs	Load Capacity Kgf/2pcs	Material	Finish
—	—	183148	983919	6, 8, 10	300 or less	100	10	Stainless Steel (SUS 304)	Mirror Plating
—	—	183149	983920						Satin Finish

Glass Shelf Brackets Type 2881

SUS TEMPERED GLASS



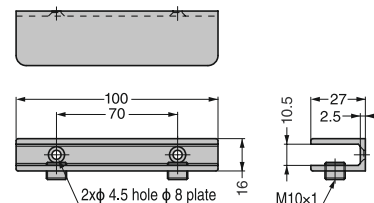
- Fix the glass plate with a hexagonal wrench (nominal size 5).
- Parts set with tempered glass shelf plate is also available.

【Recommended screw】

- Cross recessed countersunk tapping screw Nominal 4 or countersunk screw M4 (stainless steel)

【Note】

- Please be sure to check the plate support load data table



RcHS	CAD	Product Code	Product Name	Application Glass Thickness	Shelf Depth	Shelf Depth With Stand Load N/2pcs	Load Capacity Kgf/2pcs	Material	Finish
		183136	983907	6, 8, 10	300 or less	100	10	Stainless Steel (SUS 304)	Satin Finish
		183137	983908						

Glass Shelf Brackets Type 3073

SUS TEMPERED GLASS



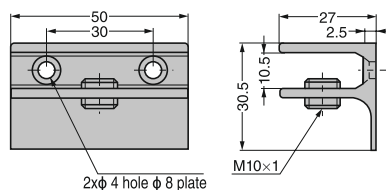
- Made of stainless steel, it has excellent corrosion resistance.
- Use a hexagonal wrench (nominal size 5) to fix the glass plate.
- Parts set with tempered glass shelf plate is also available

【Recommended screw】

- Cross recessed countersunk tapping screw Nominal 4 or countersunk screw M4 (stainless steel)

【Note】

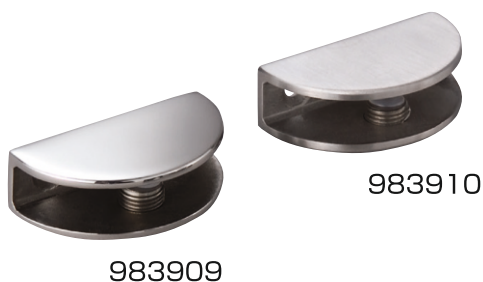
- Please be sure to check the plate support load data table



RcHS	CAD	Product Code	Product Name	Application Glass Thickness	Shelf Depth	Shelf Depth With Stand Load N/2pcs	Load Capacity Kgf/2pcs	Material	Finish
—	—	183150	983921	6, 8, 10	300 or less	75	7.5	Zinc Alloy (ZDC) Stainless Steel (304)	Mirror Plating
—	—	183151	983922						Satin Finish

Glass Shelf Brackets Type 2884

SUS TEMPERED GLASS



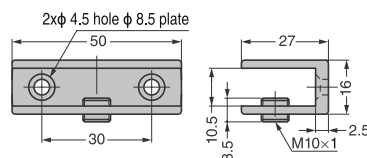
- Fix the glass plate with a hexagon wrench (nominal 5).
- There is also a parts set with a tempered glass shelf.

【Recommended screw】

- Cross recessed countersunk tapping screw Nominal 4 or countersunk screw M4 (stainless steel)

【Note】

- Please be sure to check the plate support load data table



RdHS	CAD	Product Code	Product Name	Application Glass Thickness	Shelf Depth	Shelf Depth With Stand Load N/2pcs	Load Capacity Kgf/2pcs	Material	Finish
—	—	183138	983909	6, 8, 10	300 or less	50	2	Stainless Steel (SUS304)	Mirror Plating
—	—	183139	983910			50	2	Stainless Steel (SUS304)	Satin Finish

Glass Shelf Brackets Type 2885

SUS TEMPERED GLASS



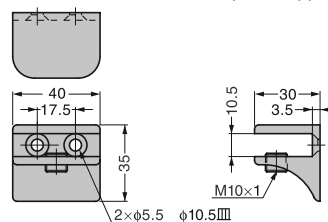
- Fix the glass plate with a hexagon wrench (nominal 5).
- Parts set with tempered glass shelf plate is also available

【Recommended screw】

- Cross recessed countersunk tapping screw Nominal 4 or countersunk screw M5 (stainless steel)

【Note】

- Please be sure to check the plate support load data table



RdHS	CAD	Product Code	Product Name	Application Glass Thickness	Shelf Depth	Shelf Depth With Stand Load N/2pcs	Load Capacity Kgf/2pcs	Material	Finish
—	—	183132	983911	6, 8, 10	300 or less	100	10	Stainless Steel (SUS304)	Mirror Plating
—	—	183133	988912					Stainless Steel (SUS304)	Satin Finish

Glass Shelf Brackets 983917, 983918

SUS TEMPERED GLASS



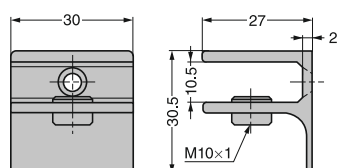
- Made of stainless steel, it has excellent corrosion resistance.
- Fix the glass plate with a hex wrench (nominal size 5).

【Recommended screw】

- Cross-recessed countersunk tapping screw nominal size 4, or countersunk head screw M4 (stainless steel)

【Note】

- Please be sure to check the plate support load data table



RdHS	CAD	Product Code	Product Name	Application Glass Thickness	Shelf Depth	Shelf Depth With Stand Load N/2pcs	Load Capacity Kgf/2pcs	Material	Finish
—	—	183146	983917	6, 8, 10	300 or less	75	7.5	Stainless Steel (SUS 304)	Mirror Plating
—	—	183147	983918					Stainless Steel (SUS 304)	Satin Finish

Glass Shelf Brackets Type 2880

SUS TEMPERED GLASS



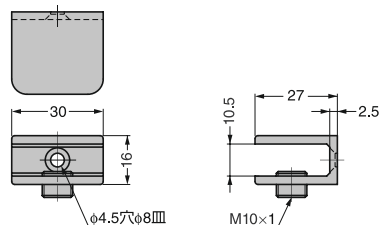
- Fix the glass plate with a hex wrench (nominal size 5).

【Recommended screw】

- Cross recessed countersunk tapping screw Nominal 4 or countersunk screw M4 (stainless steel)

【Note】

- Please be sure to check the plate support load data table



RdHS	CAD	Product Code	Product Name	Application Glass Thickness	Shelf Depth	Shelf Depth With Stand Load N/2pcs	Load Capacity Kg/2pcs	Material	Finish
—	—	183134	983905	6, 8, 10	300 or less	50	5	Stainless Steel (SUS 304)	Mirror Polishing
—	—	183135	983906						Satin Finish

Glass Shelf Brackets 983915, 983916

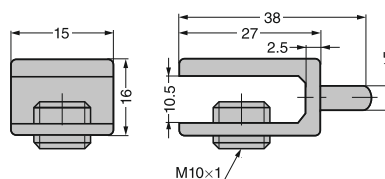
SUS TEMPERED GLASS



- Made of stainless steel, it has excellent corrosion resistance.
- Fix the glass plate with a hex wrench (nominal size 5).
- Drill a hole in the wall and insert a pin into it.

【Note】

- Please be sure to check the plate support load data table



RdHS	CAD	Product Code	Product Name	Application Glass Thickness	Shelf Depth With Stand Load N/2pcs	Load Capacity Kg/2pcs	Material	Finish
—	—	183142	983915	6, 8, 10	20	2	Stainless Steel (SUS 304)	Mirror Plating
—	—	183143	983916					Satin Finish

Glass Shelf Brackets 983913, 983914

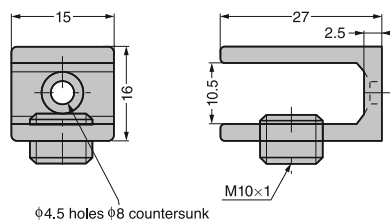
SUS TEMPERED GLASS



- Made of stainless steel, it has excellent corrosion resistance.
- Fix the glass plate with a hex wrench (nominal size 5).

【Note】

- Cross-recessed countersunk tapping screw nominal size 4 or countersunk screw M4 (stainless steel)
- Please be sure to check the plate support load data table



RdHS	CAD	Product Code	Product Name	Application Glass Thickness	Shelf Depth	Shelf Depth With Stand Load N/2pcs	Load Capacity Kg/2pcs	Material	Finish
—	—	183140	983913	6, 8, 10	300 or less	300	3	Stainless Steel (SUS 304)	Mirror Plating
—	—	183141	983914						Satin Finish

Glass Shelf Brackets Type 2877

SUS TEMPERED GLASS



983901

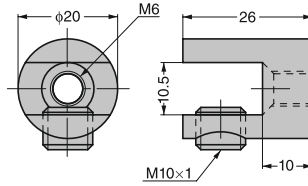
- Fix the glass plate with a hex wrench (nominal size 5).

【Caution】

- Use screws 2878ST8 and 2879 according to the application.

【Note】

- Please be sure to check the plate support load data table



RdHS	CAD	Product Code	Product Name	Application Glass Thickness	Shelf Depth	Shelf Depth With Stand Load N/2pcs	Load Capacity Kgf/2pcs	Material	Finish
—	—	183144	983901	6, 8, 10	300 or less	50	5	Stainless Steel (SUS 304)	Mirror Plating Satin Finish

Glass Shelf Brackets single-sided mounting parts For 2879 Type 2877 Type

SUS TEMPERED GLASS

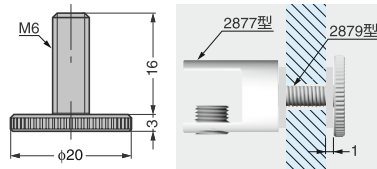


983904

- Made of stainless steel, it has excellent corrosion resistance.

【Recommended hole】

- The glass processing dimension is $\phi 8$ mm.



RdHS	CAD	Product Code	Product Name	Application Glass Thickness	Shelf Depth With Stand Load N/2pcs	Load Capacity Kgf/2pcs	Material	Finish
—	—	183152	983904	6, 8, 10			Stainless Steel (SUS 304)	Mirror Plating Satin Finish

Glass Shelf Brackets 983923, 983924



983923

983924

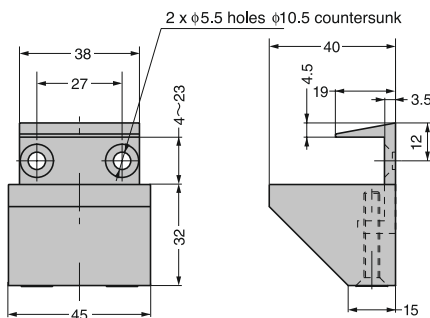
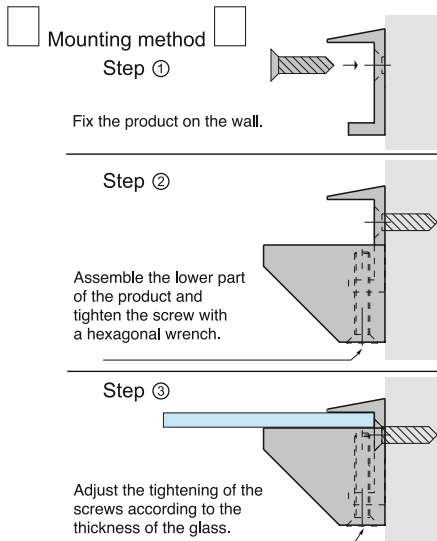
- Made of stainless steel, it has excellent corrosion resistance.
- Use a hexagonal wrench (nominal size 3) to tighten the screw from the bottom to fix the glass plate.

【Recommended screws】

- Cross recessed countersunk tapping screw nominal 5 or countersunk screw M5 (stainless steel)

【Note】

- Please be sure to check the plate support load data table



RdHS	CAD	Product Code	Product Name	Application Glass Thickness	Shelf Depth	Shelf Depth With Stand Load N/2pcs	Load Capacity Kgf/2pcs	Material	Finish
—	—	183153	983923	4 ~ 23	300 or less	100	10	Stainless Steel (SUS 304)	Mirror Plating
—	—	183154	983924						Satin Finish



Sugatsune Kogyo India Pvt. Ltd.

sales@sugatsune.in | <https://global.sugatsune.com/in/en/>

MUMBAI DISPLAY STUDIO

No. G-002 & B-02, Ground Floor,
Kanakia Atrium-2, Chakala,
Next to Courtyard Marriott Hotel,
Andheri Kurla Road, Andheri East,
Mumbai - 400093, Maharashtra,
☎ : 8419976934
9867299597
📍 8419988316

DELHI DISPLAY STUDIO

FIEE Complex, A36 Okhla Phase 2,
New Delhi - 110020
Tel : 011 - 45093636
☎ : 8419900923
9867299597
📍 8419988316

CHENNAI DISPLAY STUDIO

23/2, Old No:-39/2, 2nd Floor,
Cenetoph Road, 1st Lane,
Teynampet, Chennai-600018,
Tamil Nadu.
☎ : 8419976934
9867299597
📍 8419988316

PUNE DISPLAY STUDIO

3rd Flr, Beside Laxmi Narayan Chiwada,
Near katariya high school,
Mukund Nagar, Pune - 411037,
Maharashtra.
☎ : 8419976934
9867299597
📍 8419988316



we are available on

UPDATED MARCH 2022